

KOMATSU

ALL YOUR METALWORKING NEEDS



Plasma
cutting

TFP

TFPL

TOMORROW'S TECHNOLOGY TODAY

TFP series

2 in 1
PLASMA/QUICK GAS
TORCH OPTION

TABLE SIZE AVAILABLE
5X10 & 6X12

FANUC 0I-MD CNC CONTROL

DOWN DRAFT TABLE
"PUSH PULL EXHAUST"

QUICK AND EASY ACCESS
TO WASTE CARTS

FANUC CNC Control, Model 0i-MD

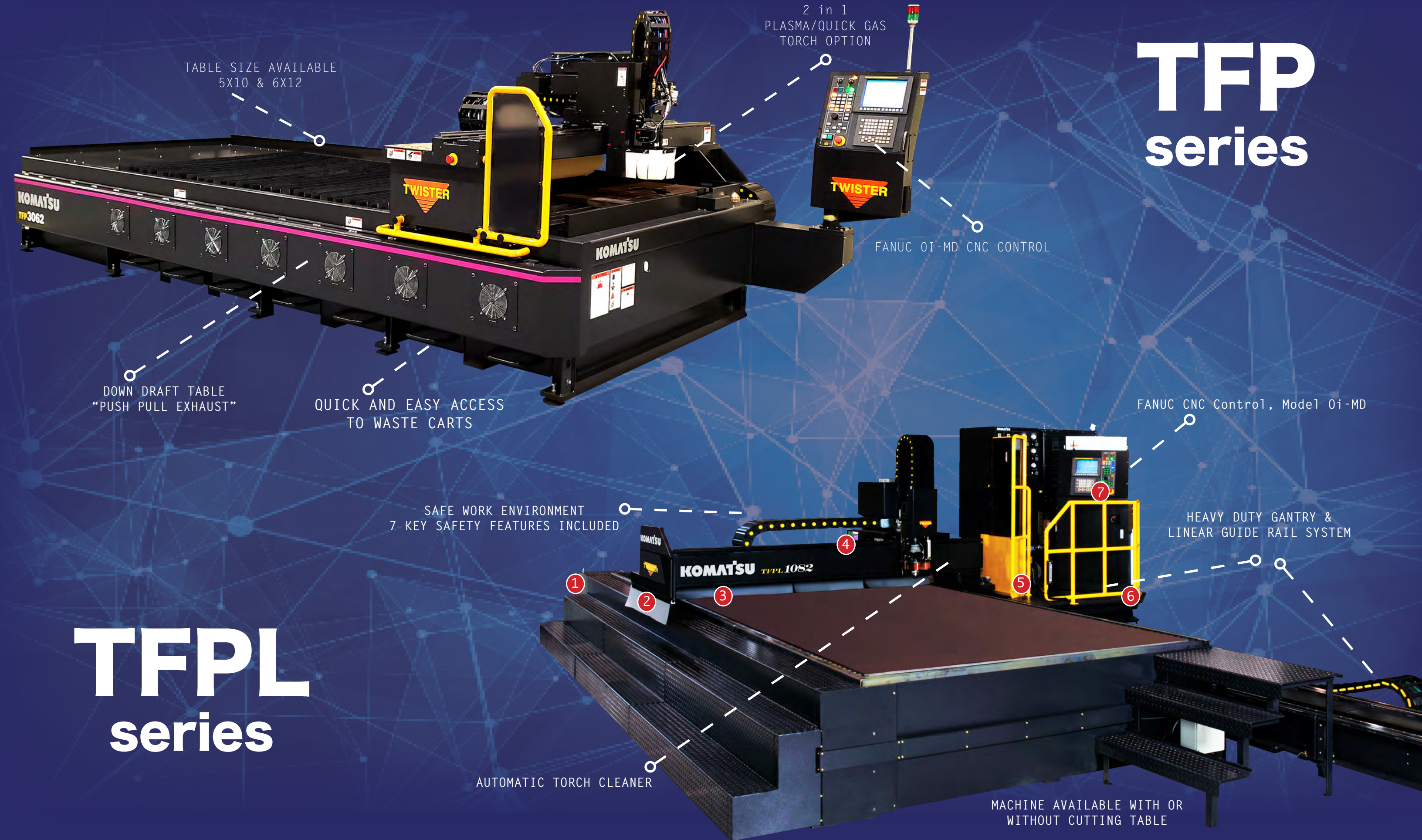
SAFE WORK ENVIRONMENT
7 KEY SAFETY FEATURES INCLUDED

HEAVY DUTY GANTRY &
LINEAR GUIDE RAIL SYSTEM

TFPL series

AUTOMATIC TORCH CLEANER

MACHINE AVAILABLE WITH OR
WITHOUT CUTTING TABLE



TFP series

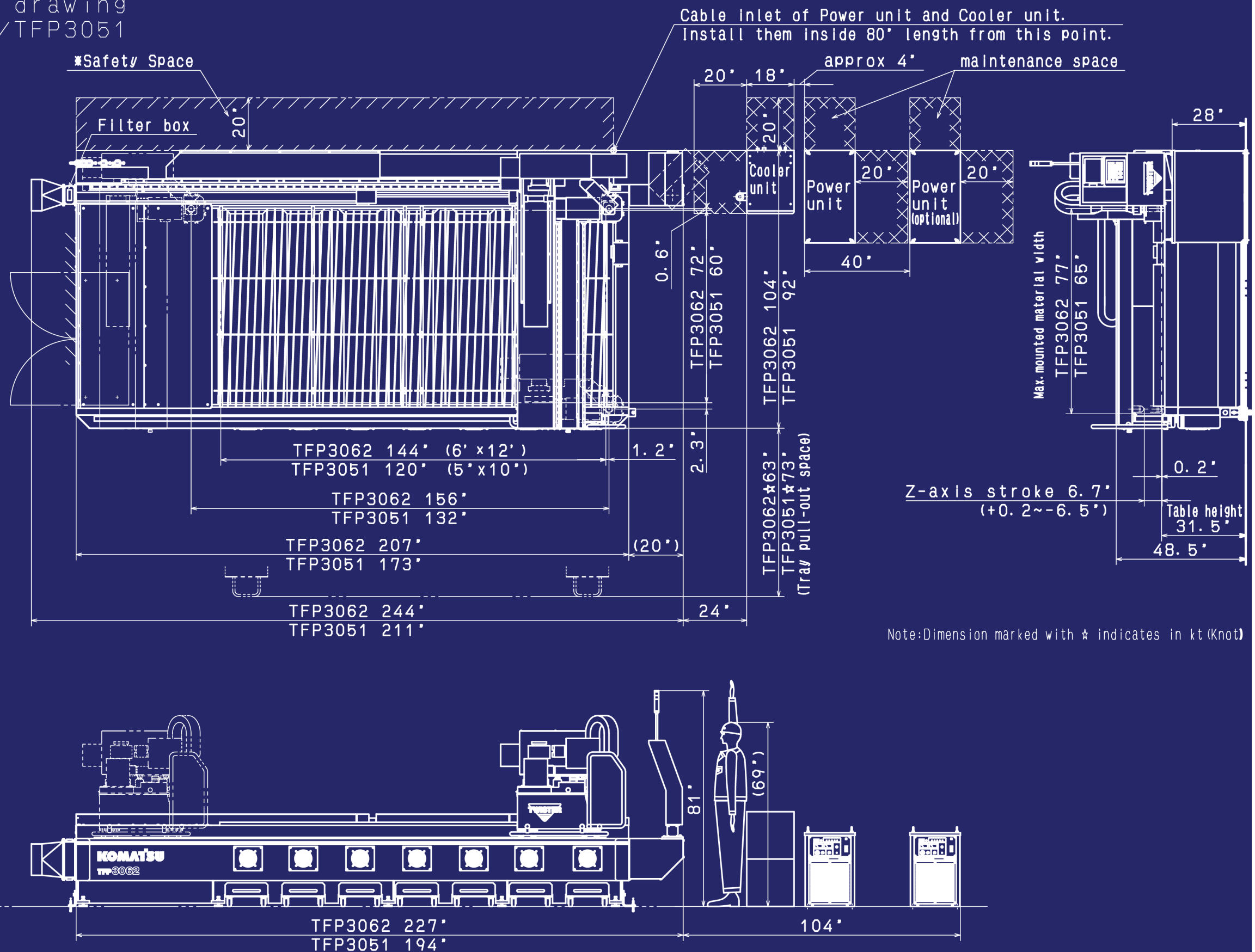
FEATURES:

- Lower running cost thanks to improved consumable life with the NEW "Single Cartridge" type consumable, exclusive from KOMATSU.
- Easy operation with our completely automated gas change system.
- 2 in 1 option, Plasma & Quick Gas (flame cutting) on the same torch.
- 2 yr. Warranty on all components (mechanical, electrical, software).
- KOMATSU Nesting Software included.
- "Quick Silver" cutting technology, enables you to cut non ferrous materials.



CONSTRUCTION
<ul style="list-style-type: none">• Unitized frame
TABLE SIZE:
<ul style="list-style-type: none">• 5'x10'• 6'x12'
CUTTING SPEEDS:
<ul style="list-style-type: none">• 0 to 200" (process and plasma power source may affect speeds)
MAXIMUM TRAVERSE SPEEDS:
<ul style="list-style-type: none">• 1000 IPM.
TABLE TYPE:
Zoned down draft table with KOMATSU "Push Pull" design.
RAILS:
<ul style="list-style-type: none">• X & Y axis are Rack & Pinion + THK, heavy duty linear guide bearings.• Z axis is a Ball Screw & THK, heavy duty linear guide bearings.
MOTORS / GEARBOXES:
<ul style="list-style-type: none">• FANUC AC Servo motors and Gearboxes on all drives (0% Backlash).
CNC CONTROLLER:
<ul style="list-style-type: none">• Fanuc, Oi-MD CNC Control.• USB memory• FANUC transfer tool via server.
CUTTING CAPABILITY:
<ul style="list-style-type: none">• 150-amp Plasma Unit- 16 Gauge to 1.0" Mild Steel.• 300-amp Plasma Unit- 16 Gauge to 1.5" Mild Steel.
QUICK GAS (FLAME CUTTING):
<ul style="list-style-type: none">• 2" piercing, 3" edge start from the side of the plate.
NESTING SOFTWARE:
<ul style="list-style-type: none">• RASOR Nest• Path Master• Razor Server <p><i>NOTE: Original KOMATSU Nesting Software included with the equipment, as well as permanent license key.</i></p>
AVAILABLE UPGRADES:
<ul style="list-style-type: none">• Quick gas (flame cutting) is optional on all KOMATSU models, increasing cutting capabilities on mild steel to 2"• "Power Up" upgrade. Converts your 150-amp plasma unit into a 300-amp unit. Increases your cutting capabilities to 1.5" on mild steel.

6. General drawing TFP3062/TFP3051



TFPL series

FEATURES:

- NEW 100kW TWISTER torch & modular power unit.
- Safe work environment. **7 key safety features implemented, making it one of the safest machines on the market.**
- Automatic torch cleaner. **Cleans spatter and dust off the torch head for a cleaner cut and higher consumable life.**
- Easy operation with our completely automated gas change system.
- 2 in 1 option, Plasma & Quick Gas (flame cutting) on the same torch.
- 2 yr. Warranty on all components (Mechanical, electrical, software).
- KOMATSU Nesting Software included.
- “Quick Silver” cutting technology, enables you to cut nonferrous materials.



CONSTRUCTION

- Modular design, bridge and rails.

TABLE SIZE:

- 8'x20'
- 8'x40'
- 10'x20'
- 10'x40'

CUTTING SPEEDS:

- 0" to 200" (Process and plasma power source may affect speeds)

CUTTING CAPABILITY:

- 150-amp Plasma Unit- 16 Gauge to 1.0" Mild Steel.
- 300-amp Plasma Unit- 16 Gauge to 1.5" Mild Steel.
- 525-amp Plasma Unit- 16 Gauge to 2" Mild Steel.

TRAVERSE SPEEDS:

- X axis, 787 IPM.
- Y axis, 1575 IPM.
- Z axis, 7871 IPM.

TABLE TYPE:

Zoned down draft table with **KOMATSU "Push Pull"** design.(Table not included)

RAILS:

- X & Y, RACK & PINION + THC Linear guide heavy duty bearings.
- Z axis, ball screw + THC Linear guide heavy duty bearings.

MOTORS / GEARBOXES:

- FANUC AC Servo motors and Gearboxes on all drives (0% Backlash).

CNC CONTROLLER:

- FANUC, Oi-MD CNC Control.
- USB memory
- FANUC transfer tool via server.
- CF card

QUICK GAS (FLAME CUTTING):

- 3" piercing, 4" edge start from the side of the plate.

NESTING SOFTWARE:

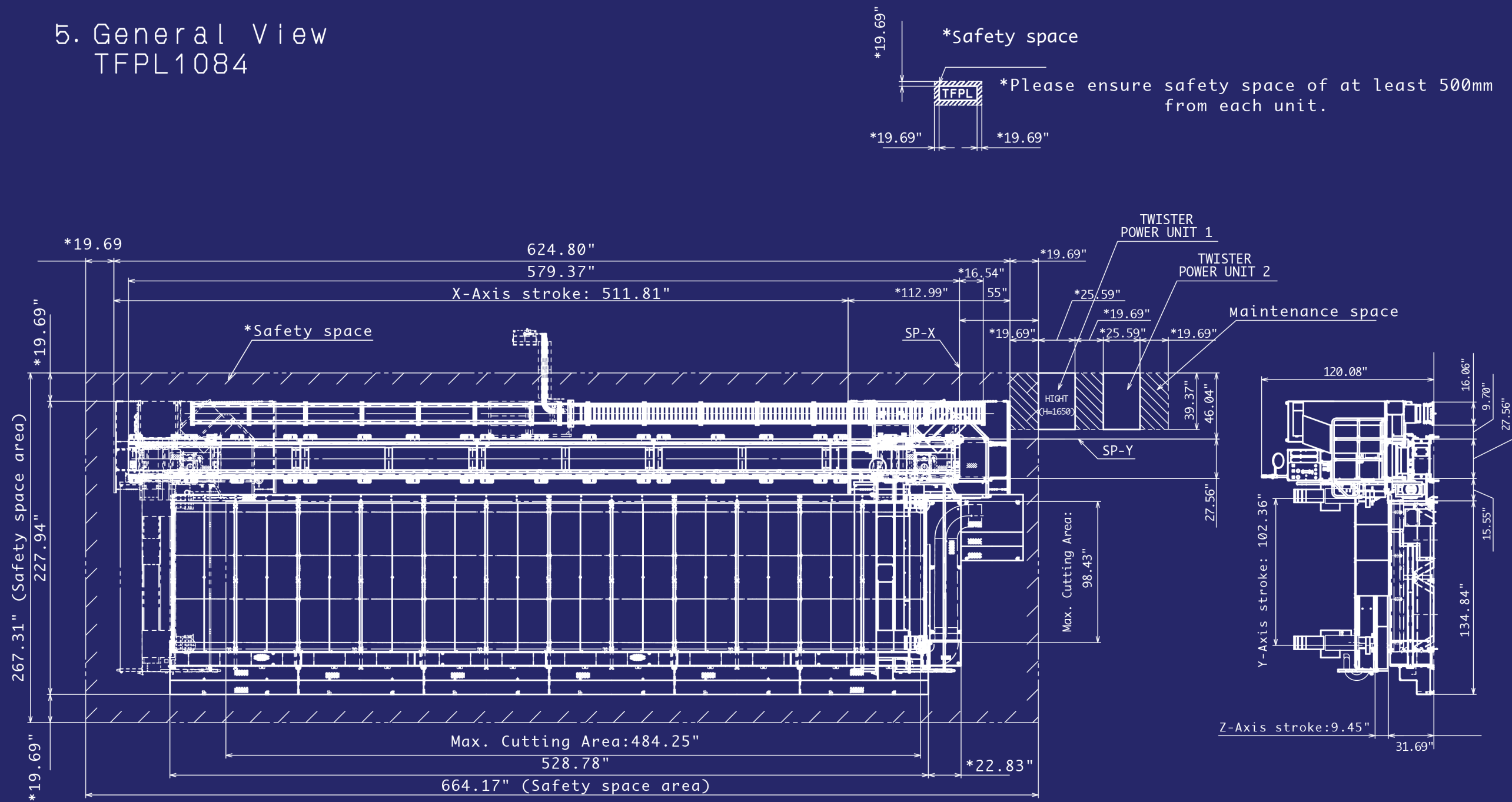
- RASOR Nest
- Path Master
- Rasor Server

NOTE: Original KOMATSU Nesting Software included with the equipment, as well as permanent license key.

AVAILABLE UPGRADES:

- Quick gas (flame cutting) is optional on all KOMATSU models, increasing cutting capabilities on mild steel to 3"
- "Power up" upgrade. Converts your 150-amp plasma unit in too a 300-amp unit. Increases your cutting capabilities to 1.5" on mild steel. **NOTE:** Power Up upgrade only applies on 150A plasma units.

5. General View
TFPL1084



* AVAILABLE WITH OR WITHOUT TABLE

NOTE: Table layout may vary depending on machine table size.

TFPLseries

PLASMA & OXY PROPANE CUTTING SPEEDS (MILD STEEL)

THICKNESS	NOZZLE SIZE	CUT SPEED	OUTPUT CURRENT
16Ga	.7	100-300	40
13Ga	.7	70-200	40
11Ga	.7	65-130	40
7Ga	.7	60-80	40
1/4	1.1	140-180 NA NA	NA NA
3/8	1.1 1.3	80-100 120-140 NA	NA NA
1/2	1.1 1.3 1.7	75-90 100-120 150-170	NA NA
.625	1.3 1.7	NA 80-90 115-130	NA NA
.750	1.3 1.7	NA 70-80 100-120	NA NA
.875	1.7 2.2	NA NA 75	90-100 NA
1.00	1.7 2.2 2.8 3.2	NA NA 65	70 85 100
1.250	2.2 2.8 3.2	NA NA NA	50 60 70
1.50	2.2 2.8 3.2	NA NA NA	40 50 60
2.0	3.2	NA NA NA	45
1.25 Flame cut	#5 #6	Pre heat time 2.5 min.	13 inches/ min
1.50 Flame cut	#5 #6	Pre heat time 3.5 min.	10 inches/ min
2.0 Flame cut	#5 #6	Pre heat time 4.0 min.	8 inches/ min
3.0 Flame cut	#5 #6	Pre heat time 5.0 min.	8 inches/ min

TFPseries

PLASMA & OXY PROPANE CUTTING SPEEDS (MILD STEEL)

THICKNESS	NOZZLE SIZE	CUT SPEED	OUTPUT CURRENT
16Ga	.7	100-300	40
13Ga	.7	70-200	40
11Ga	.7	65-130	40
7Ga	.7	60-80	40
.250	1.1	170	90
.312	1.1	160	90
.375	1.1	80	90
.500	1.1	65	90
.250	1.6	200	150
.375	1.6	150	150
.500	1.6	110	150
.750	1.6	70	150
.875	1.6	50	150
1.0	1.6	45	150
.625	2.2	125	300
.750	2.2	110	300
1.0	2.2	80	300
1.125	2.2	70	300
1.250	2.2	55	300
1.50	2.2	47	300
1.25 Flame cut	#5 #6	Pre heat time 2.5 min.	13 inches/ min
1.50 Flame cut	#5 #6	Pre heat time 3.5 min.	10 inches/ min
2.0 Flame cut	#5 #6	Pre heat time 4.0 min.	8 inches/ min



TFPL series

HIGH lights



In today's fast pace metal Industry, **High Productivity** is a must. Keeping up with your plasma cutting needs requires a machine that can produce high quality, low cost, precision parts, at fast speeds.

KOMATSU has succeeded in creating a machine that can keep up with the industry's demands regardless of metal type or thickness, without having to sacrifice quality. KOMATSU'S TFP series is an innovative plasma cutter that makes KOMATSU your best option.

Our TFP series **Improved Cutting Quality** exceeds today's industries standards. The exclusive "TWISTER gas flow control" (Patent Pending) technology allows the disparity between upper- and lower-hole size to reduce substantially, creating a cleaner and closer tolerance on every hole. Our patented TWISTER gas technology (No.2689310, No.2997224) pushes a powerful downward spiral flow around the arc, reducing the amount of dross produced on every part

regardless of the thickness. **KOMATSU is constantly coming up with new & innovative ideas** that help reduce steps in our machines processes. Our machines make the cutting process a very smooth and **Easy Operation**, by reducing the amount of consumable parts, automatically creating optimal work conditions and fully automated cutting options that can start work with a press of a button. The TFP series

Low Cost Performance makes KOMATSU a leader in the industry. From its patent: "Low Flow Pattern Gas Control", which allows you to extend the life of your consumables, to reducing consumable use from 6 individual parts to 1. With our exclusive "Single Cartridge" technology, you can rest assured that you will be saving money & time every day.

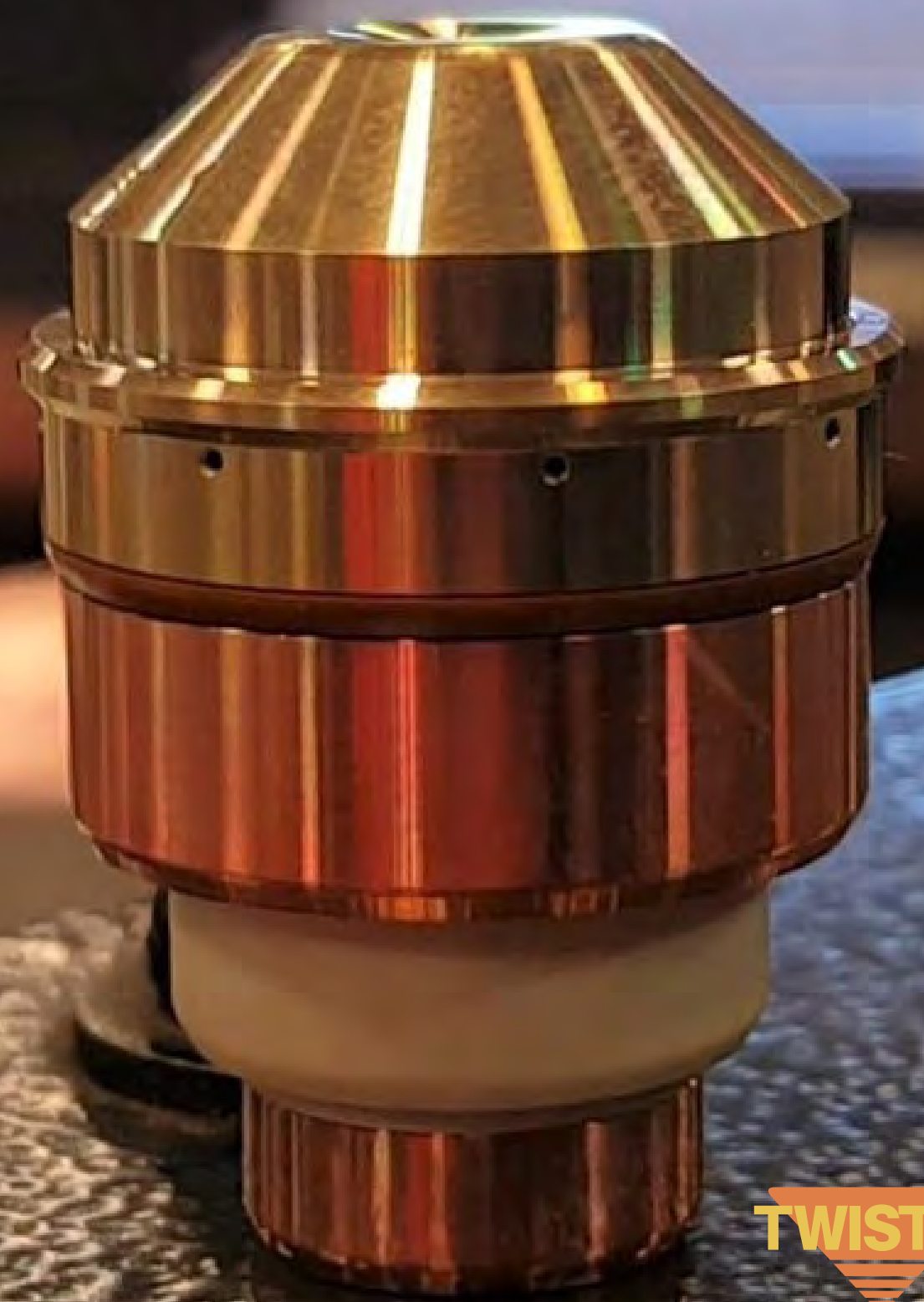
TFP series



The ***NEW*** “Single Cartridge” Consumable

Thanks to KOMATSU's redesigned plasma torch, we have created a significant advance in plasma cutting technology.

Our unique “*Single Cartridge*” consumable has an increased cut quality and accuracy that has been obtained thanks to its exclusive nozzle design and new cutting process. The 1 piece set up reduces time and inventory from 6 individual parts to 1. It offers a 60% increase in consumable life when compared with our old style, that's more than double the productivity, with increased performance and less operator intervention.



Exclusively at **KOMATSU**



TWIN POWER SUPPLIES

With our new TWIN POWER SUPPLIES upgrade, cutting capacity is increased from 150A(30kW) to 300A(60kW). Increasing capacity from 1" to 1.5" on mild steel.

HIGH PRODUCTIVITY

Cutting speeds have been increased dramatically thanks to our 30kW Plasma Power Unit and high speed TWISTER gas flow.

Our patent :
(No.2689310, No.2997224),
TWISTER Gas Flow Design
pushes a powerful downward
spiral flow around the arc,
reducing the amount of dross
produced on every part
regardless of the thickness.
Thanks to our new twin power
supplies upgrade,

**Our TWISTER
series machines
can be upgraded
from 30kW
to 60kW,
increasing the
cutting capacity
and speed.**

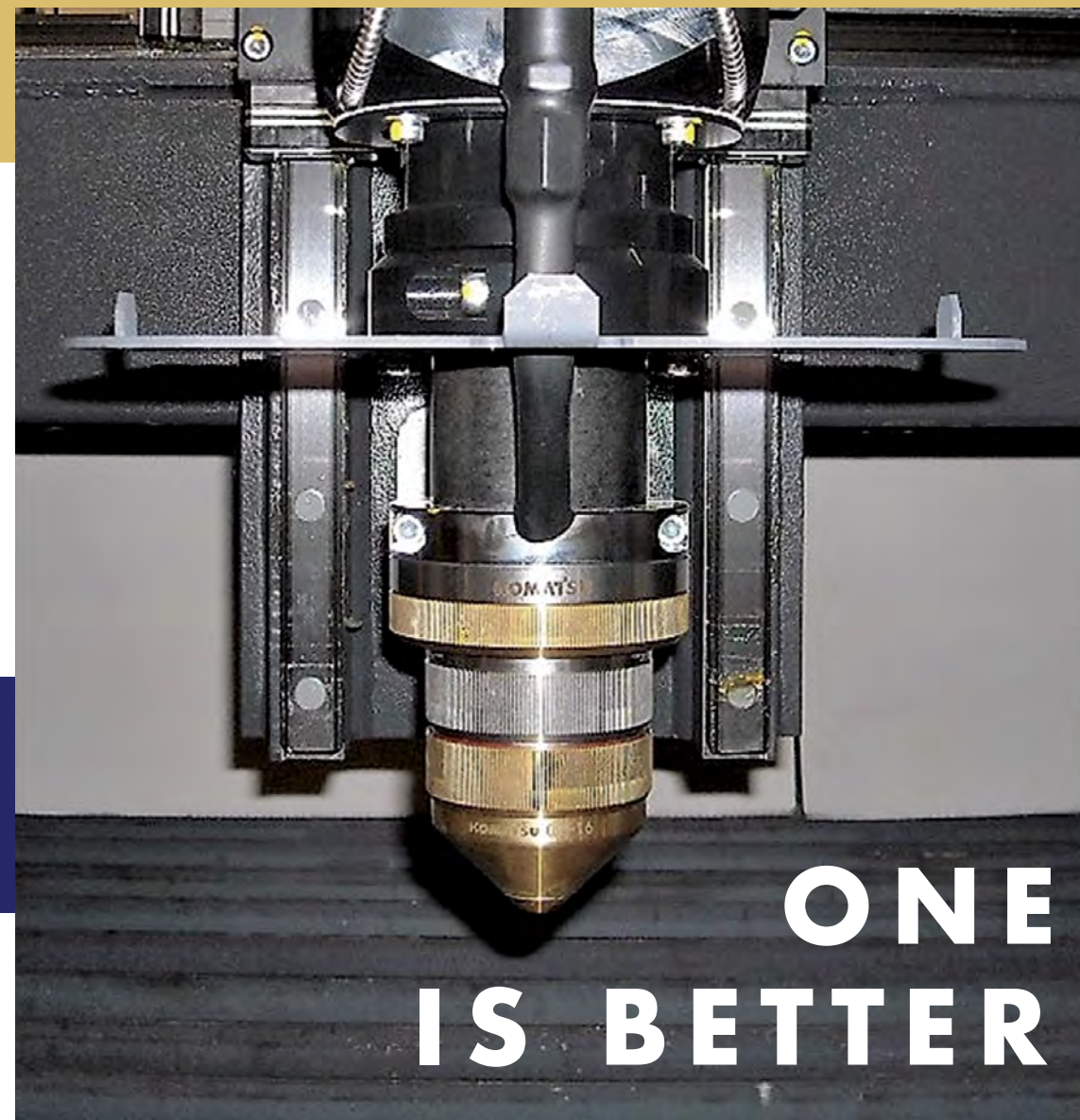
Example: The 30 kW plasma
unit torch uses a 1.6 nozzle to
cut 1" thick plate (mild steel),
at approximately 30 ipm.

The 60 kW TPS upgraded
torch uses a 2.2 nozzle to cut
1" thick plate at approx. 80
ipm. Increasing speeds by
120%. Another great feature
is that TPS plasma units can
work independently from each
other. Meaning, if one of the
units needs service or repairs,
the other unit can continue
working, so production never
stops. Also, when cutting
thick plate (.750"-1.00"), our
new process leaves very little
dross which is easily removed,
leaving 0 to minimal secondary
operations, saving you time
and money in the process.

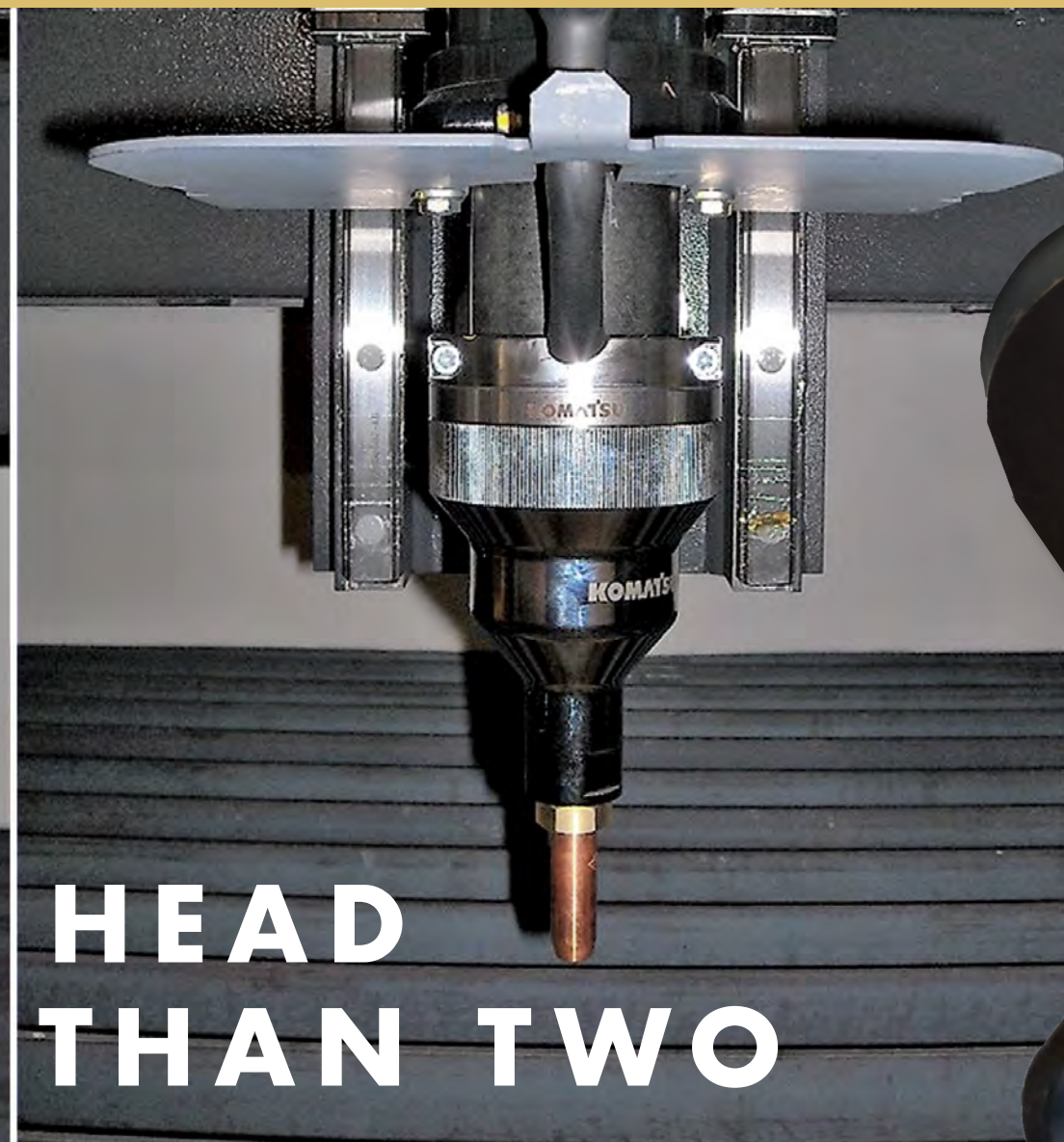


150 AMP + 150 AMP

POWER + UP



**ONE
IS BETTER**



**HEAD
THAN TWO**



PLASMA + QUICK GAS *on the same torch.*

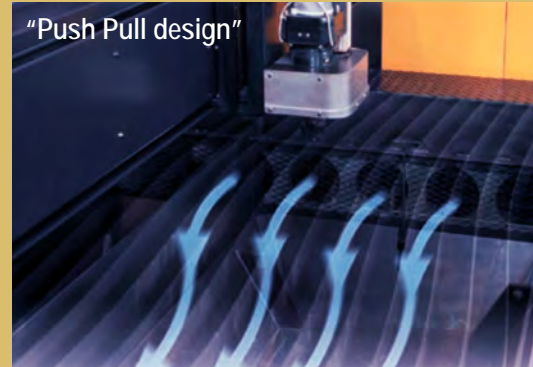
Our TFP & TFPL series machines come with an innovative torch design that allows you to go from *Plasma* to *Oxy-fuel* cutting on the same torch in a matter of minutes.

The Oxy - fuel option increases cutting capacity by up to two inches on our TFP & TFPL models. Switching between processes (PLASMA and OXY-FUEL) is accomplished simply by swapping caps on the same torch.

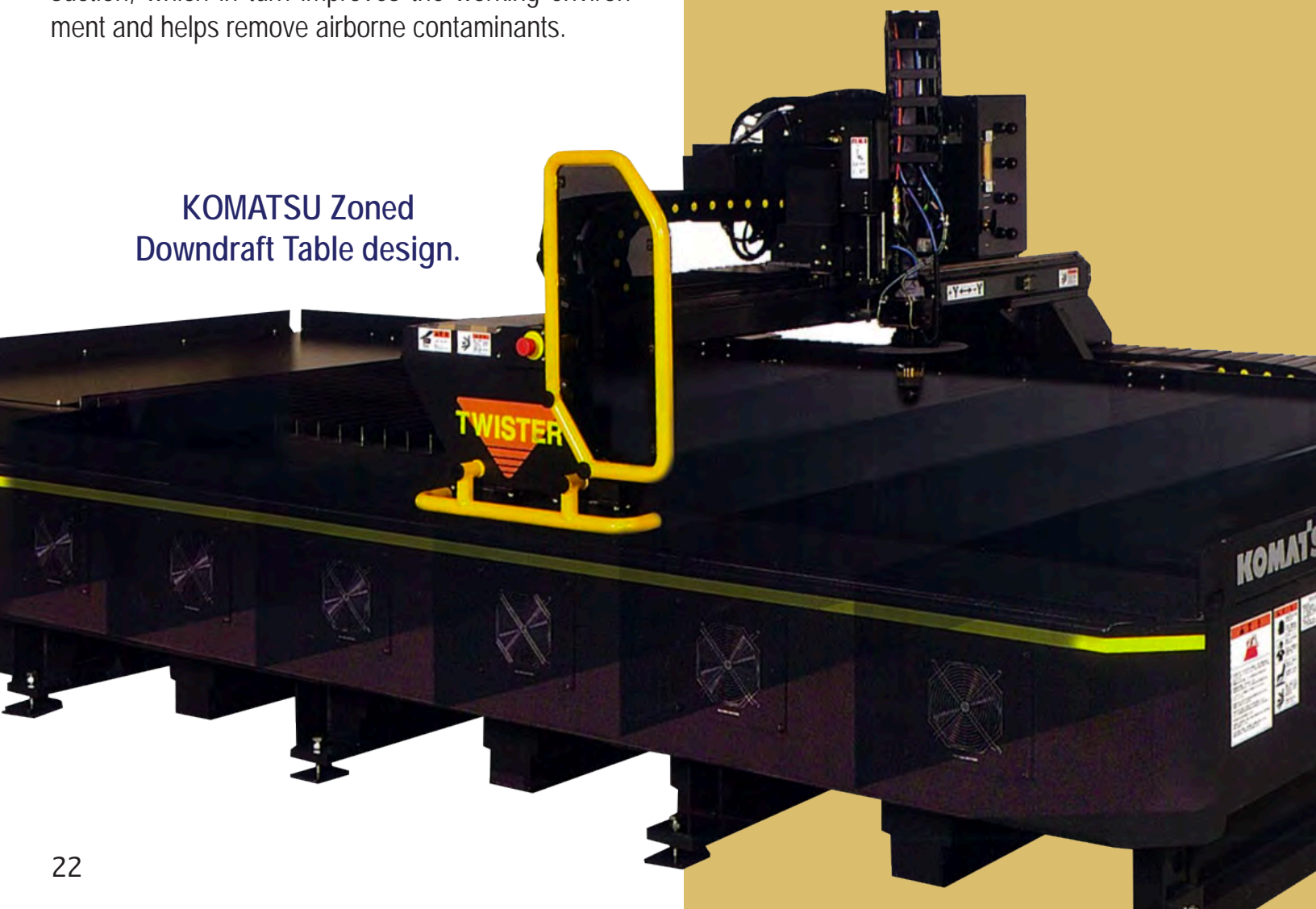
PUSH PULL TECHNOLOGY

Our exclusive KOMATSU *"Push Pull"* exhaust system (Patent Pending) greatly reduces the up-flow of fumes generated by the cutting process.

The *"Push Pull"* design is an effective fume collection system that works by creating a zoned process that greatly limits the amount of fumes that escape from the table. This achieves a stronger more complete suction, which in turn improves the working environment and helps remove airborne contaminants.



KOMATSU Zoned
Downdraft Table design.



DOWN DRAFT PUSH PULL

(US Patent No. 6665595)



KOMATSU has partnered with Keller USA to offer you the most ideal dust collector system on the market today.

Dust Collection System for Plasma
Cutting & Thermal Process

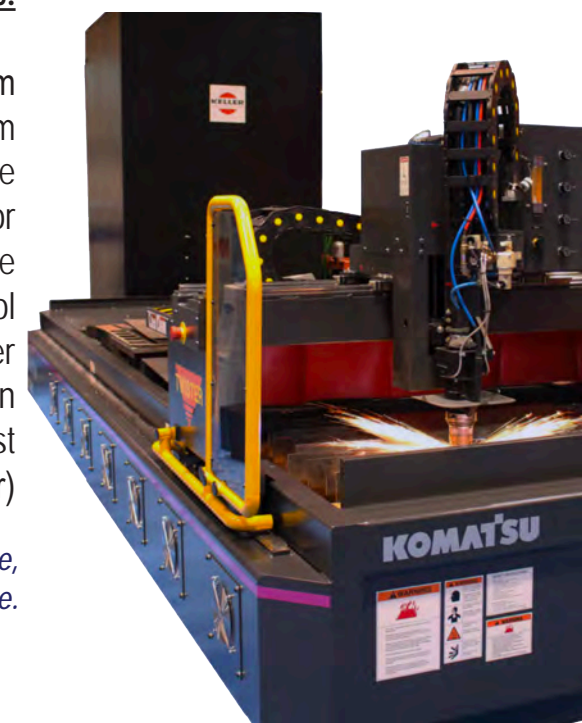


The L-CUT series is specially designed to collect and separate dust, such as fine metallic oxide particles, and fumes created by thermal processes such as joining, cutting or surface treatment by the plasma cutting process.

Brief Profile:

- Airflow 300 - 3,000 cfm
- Plug-and-Play System
- Optional HEPA-stage
- Integrated Spark Arrestor
- Integrated fan with low noise
- Integrated electrical control
- Programmable for control at the machine/laser
- Ability for facility air recirculation
- Low operating cost
- Customizable filtration media (cartridge or plate filter)

*For more information or a personalized quote,
contact your local KOMATSU CTD representative.*



RASOR NEST

INCLUDED ON ALL MACHINE MODELS.

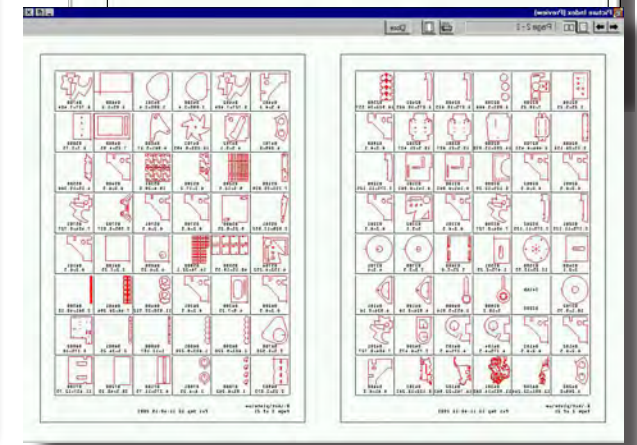
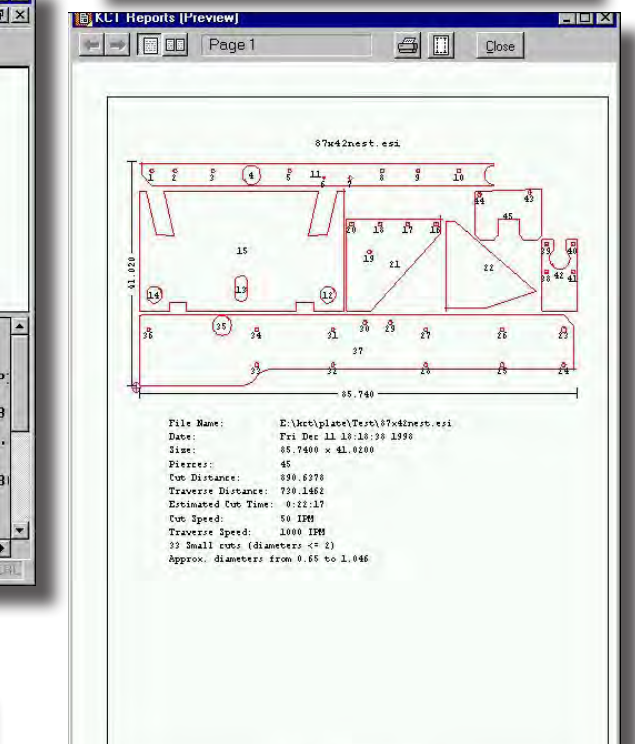
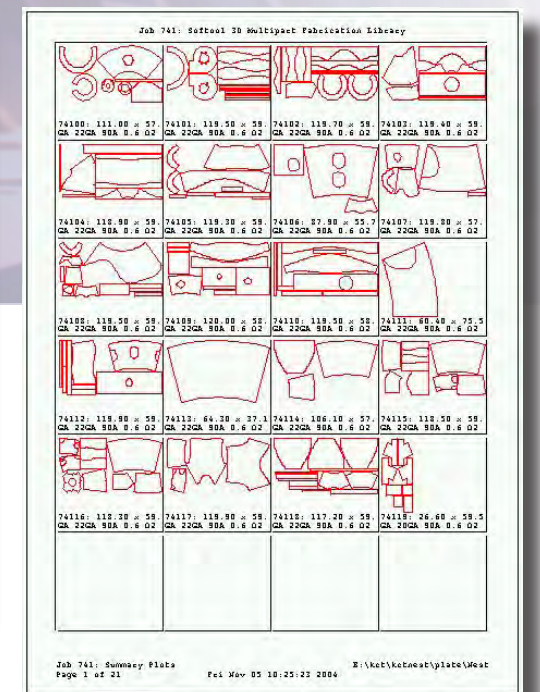
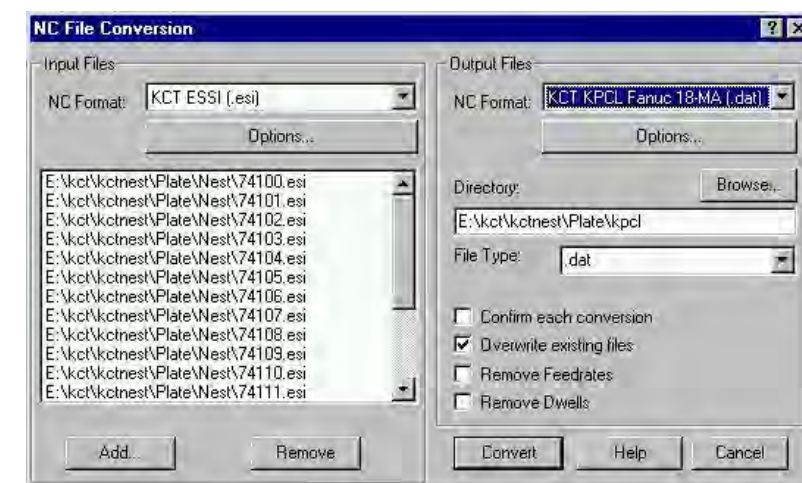
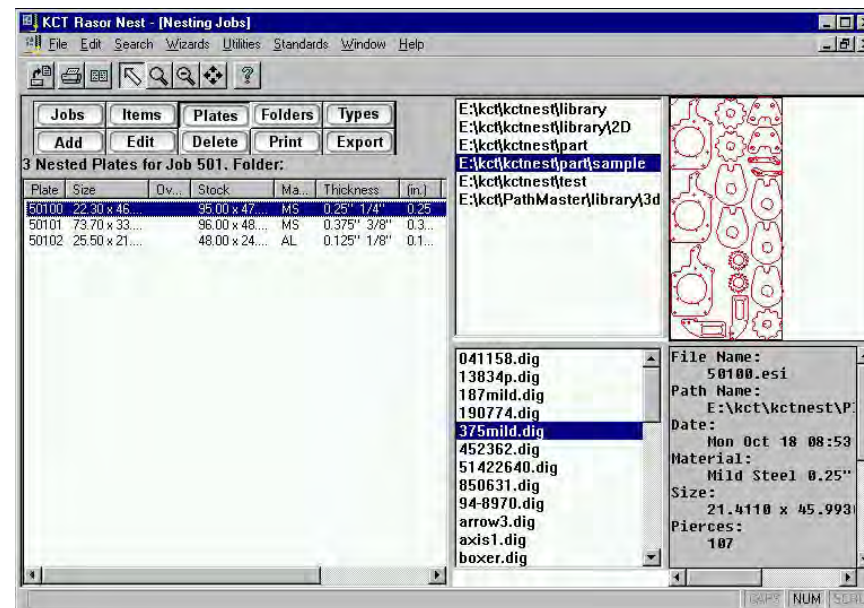
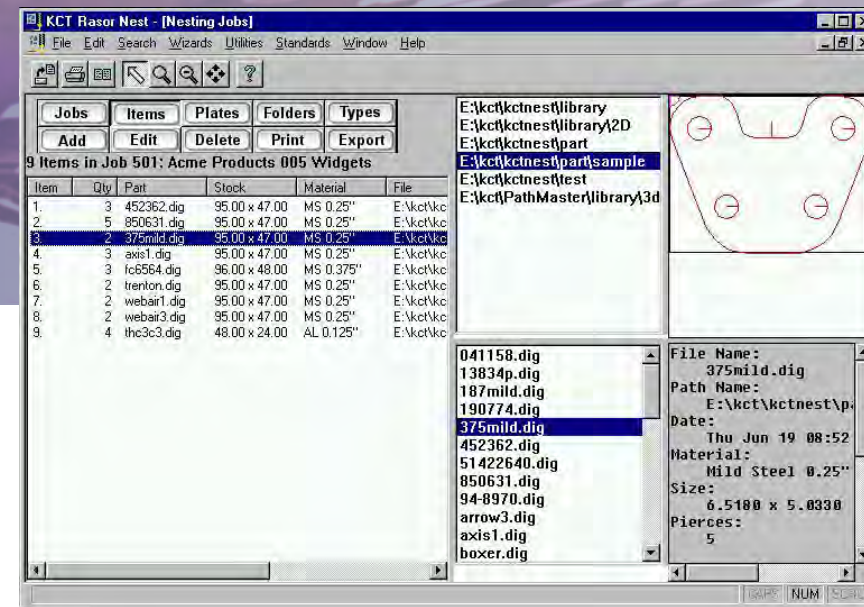
FEATURES:

- Improved nesting efficiency. More efficient use of material.
- Install on your own Windows computer.
- Combine KCT ESSI, KCT EIA, DXF, IGES, PathMaster, SofTool2D, and SofTool3D parts into one or more nested plate files that can be loaded into the Rasor controller to be cut.
- Use the Nest Editor to improve material usage by manually modifying the plate files.
- Use the NC File Converter to convert between some NC and CAD file formats.
- Automatically post process the nested plate files for the Twister TFP Series.
- Automatically post process the nested plate files for the Twister TFPL Series.
- Print a data sheet for an NC file showing the dimensions, tool path lengths, and estimated cutting time.
- Print a set of summary sheets for all NC files in a folder. The summary sheets show a small plot of the NC file, its name and overall dimensions.
- Export all of the tool path lengths, and estimated cut times for all NC part files in a folder. The file with is exported as a Comma Separated Values (.CSV) file that can be used by many spreadsheet applications.



This software package is available for Windows computers. The Rasor™ Nest Application V4.0 automatically groups NC part files together (nest) into one or more files to more efficiently use material. It can be used with the Rasor Rev controller files, the original Rasor NC files, PathMaster files, Twister NC Files, or KPCL NC Files.

Also included are a Nest Editor and an NC Converter. The Nest Editor allows manual modification of nested plate files. The NC Converter converts between some NC and CAD file formats and can be used as a post processor for TWISTER and Rasor products.





ADVANCED NESTING SOFTWARE

SigmaNEST is simply the best nesting software in the industry. Developed and supported by an expert team of mathematicians and engineers, SigmaNEST offers unparalleled material utilization and nesting efficiency.

- From import to report in just a few clicks
- One seat of software for all your cutting machines
- Fast, high-yield nesting with minimal waste
- Unmatched customization and integration options

FEATURES

INTELLIGENT DATA INTEGRATION

- Work order management and job tracking
- Inventory management and stock control
- Fast, easy quoting and cost estimation
- Full integration with MRP/ERP and other business systems
- Full integration with 2D and 3D CAD systems

WASTE LESS, SAVE MORE

- Best yield with minimum waste
- Consume less material, lowering cost per part
- Automatic inventory and heat number tracking
- Part-in-part nesting reduces cost per part
- Create and nest on remnants to improve material usage

REDUCE CYCLE TIME

- Optimal tool path sequencing for machine cycle-time reduction
- Common-line and continuous cutting
- Full control of cut direction and sequence
- Motion planning for tool life extension and part quality
- Automatic pierce reduction

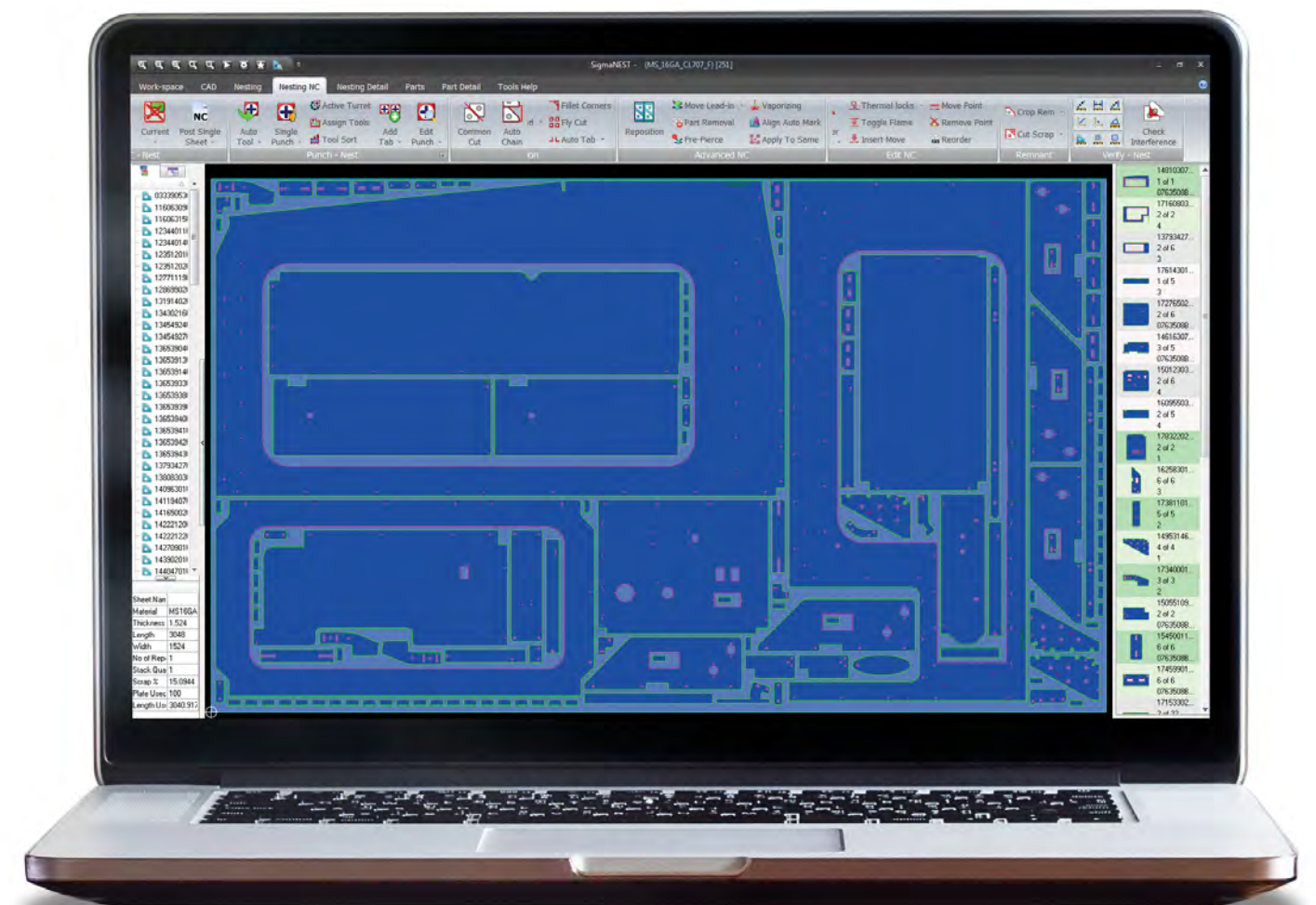
QUICK TO LEARN, EASY TO USE

- Full suite of CAD tools for part creation
- Part and assembly import from all major CAD systems
- Quoting, tracking, and inventory tools for accurate, real-time updates
- The best nesting algorithms in the industry
- Automatic NC and tool path application
- Full NC simulation and G-code display

PLASMA CUTTING EXPERTS

SIGMANEST OFFERS UNMATCHED PLASMA CUTTING TECHNOLOGY.

- Pierce reduction & elimination algorithms
- Reduce cut time
- Reduce head wear & tear - cuts operating cost
- Reduce clean up time



BHQ - RETHINK HOLE QUALITY

SigmaNEST BHQ™ improves on market leading hole quality cutting strategies to not only offer bolt hole quality, but optimize for taper, roundness and machine run time in the process.

BASIC FEATURES

- Bolt Hole Quality with BHQ™
- Optimized cut sorting for fewer gas changes with BHQ™
- Customizable table
- Chain cutting
- Bridge cutting
- Better quality corner loops
- Automatic lead-ins

ADVANCED FEATURES

- Attain longer consumable life with iPierce™
- Open architecture technology table
- Full support for machine add-ons such as marking and drilling attachments
- Bevel
- Custom specialized leadings

Get Expert Support

Our expert support team is always ready to meet your needs. Whether you have a quick question, a complicated problem, or need an on-site visit, our team will help you get the most out of your SigmaNEST solution.

For more information on the SIGMANEST software please call your local KOMATSU CTD representative.

KOMATSU

TECH SUPPORT & SERVICE

**NO MATTER WHERE YOU ARE
KOMATSU IS HERE FOR YOU**

■ With Komatsu service technicians using the most up-to-date product knowledge and technology, – along with Genuine Komatsu parts, you can be sure you're getting exactly the service you and your machine deserve.

■ Komatsu works closely with its customers to understand their needs, providing high quality service. Our goal is to keep your equipment up and running in the most critical times, and at the same time keeping our customers happy, becoming their partners for years to come.

■ Our Service Technicians offer both operation and technical training, complimented by extensive training materials for machine operation & maintenance.

AT KOMATSU

**YOU CAN ACQUIRE A
MAINTENANCE PROGRAM
THAT FITS YOUR NEEDS , AND
HAVE:**

- Scheduled maintenance performed on time and as specified in your Operation & Maintenance manual.
- Better plan and control maintenance.
- Know cost up front.
- Plan your work schedule more effectively.
- Utilize your personnel for the jobs they were hired to do
- Take care of your equipment with high quality Komatsu parts and Komatsu trained experts.

TECH SUPPORT & SERVICE

KOMATSU OFFERS

2 LOW COST MAINTENANCE PROGRAMS

Choose the one that fits you best:

- Planned Service Program - PSPBX
- Planned Service Program - PSPCX

Say goodbye to Down time by signing up today. Call us now for more information on our KOMATSU Preventative maintenance plans.

PLANNED MAINTENANCE

MAXIMIZE UP-TIME WHILE SAVING MONEY

A well-planned maintenance program can save you significant money over the life of your machine by keeping it operational and extending its life. Consider what a single failure, due to improper maintenance, can cost in terms of:

- Increased repair costs
- Loss of production
- Rental or backup machine
- Idle personnel and equipment
- Disruption of schedules

With so much at risk, today's most successful companies understand that a planned maintenance program is not a luxury , it's a necessity. That's why so many customers depend on Komatsu to keep their equipment running smooth, always at peak performance.

**KOMATSU®
GENUINE PARTS**

Komatsu Genuine Parts are manufactured to the highest quality as defined by the Komatsu Standards. They are made in-house or by carefully selected suppliers that meet our highest quality demands. Always buy KOMATSU Genuine parts to get the best performance and longest life possible on your Komatsu Plasma machine.

KOMATSU FINANCIAL

FINANCING THAT FITS TODAY'S NEEDS

THE MOST FLEXIBLE FINANCING IN THE INDUSTRY

You need to keep productivity high. Often, that means acquiring new technology. Check out the advantages of leasing with the Advantage Lease from Komatsu Financial.

The Advantage Lease is one of the most flexible financing tools in the market. You get the security of knowing your lease options from the beginning, so there are no surprises at the end. And, you get the tax benefits of leasing a new piece of Komatsu equipment (see your tax advisor for the benefits that may apply to your specific situation.)

FINANCING THAT WORKS FOR YOU

Whether you are concerned with balance sheet issues, bonding or other cash flow matters, you can live - and grow - with Komatsu Financial solutions.

In addition to 36- and 48- month terms with renewal options, Komatsu Financial also offers a 60- month term, without renewal, to make it easy for you to work payments into cash flow.

Whatever your leasing requirements. We have a financing program that fits your needs.

* Financing is subject to credit approval at time of purchase

THE ADVANTAGE LEASE

*Comes with three basic options. **At the end of your lease, you purchase your equipment, renew your lease for another 12 months or return the equipment.***

*Simply exercise the option you choose 90 days before the end of your lease. That gives you the **flexibility to respond better to the business climate at hand.** It may **even offer the additional benefit of keeping your leased equipment off your balance sheet.***

If you want to buy your equipment,** Komatsu Financial will provide you with a pre- determined cash **purchase price. You can finance your purchase with a 12 month conditional sales contract or pay cash.

If you need the equipment longer than your original term, but don't want to purchase it, you can extend your lease for an additional 12 months.

THE CHOICE IS YOURS

When it comes to financing, the Advantage Lease puts you in the operator's seat. So many options virtually ensure a solution for everyone. No surprises. No unreasonable conditions. Just high - performance equipment that's available to you on your terms.

WE'RE NOT SATISFIED UNTIL YOU ARE.

Our goal is to help you optimize productivity by maximizing efficiency. That means providing you with financing that fits.

To discuss the Advantage Lease or other Komatsu Financial programs, contact Komatsu American Industries, LLC or Komatsu Financial.

Lease Terms: 36 and 48 months.

- Convert to purchase
 - Cash purchase
 - Finance purchase for 12 months*
 - Return Equipment
 - Renew lease for 12 months
 - Cash purchase *OR FINANCE UP TO 12 MONTHS**
 - Return equipment

Komatsu America Industries, LLC.
8770 W Bryn Mawr Ave., Suite 100
Chicago, IL. 60631
For Information call:
888 - 500 - 6001
978 - 658 - 1650
www.komatsupress.com



Komatsu America Industries LLC
Cutting Technologies Div.
892 Main Street, Unit 2, Wilmington, MA. 01887
Phone: 978-658-1650 Fax: 978-658-1654

Follow us on social media

